

# WE CARE ABOUT YOUR AIR

Volume 1, Issue 1  
September 2007

**Inside this issue:**

We Care About Your Air	2
Mold of the Month	3
Our Vision, Our Mission	3
Our Values	3
Testimonials	3
Message from the CEO, Mr. Edward L. Torres	4

## ESP: WHO WE ARE AND WHAT WE DO.

ESP is the Environmental Service Professionals. We offer testing services, not mold removal (which is the remediation process). ESP provides a simple and inexpensive way to perform sampling in your home or business to find out what types of mold are present and whether they are airborne. ESP's thorough investigations are based on visual inspection, air sampling, and bulk/surface/carpet sampling, and can be used to identify specific mold, pollen and dust mite populations. ESP will provide you with complete laboratory test results that will clearly indicate if there is a presence of specific indoor allergens that may affect your health. These reports can be very helpful as part of any medical evaluation if occupants are experiencing asthma, chronic allergy and/or flu-like symptoms which may be related to mold or allergen exposure.

## IT'S ALL AROUND US: MOLD, ALLERGENS AND INDOOR POLLUTANTS

Mold is present everywhere, indoors and outdoors, and is most likely to grow where there is water or dampness. When moldy material becomes damaged or disturbed, spores can be released into the air. These spores can be inhaled, handled, or even accidentally ingested.

Indoor allergens include pollen, dust mites, animal dander and mold spores. Indoor pollutants typically come from man-made products such as carpets, paint, and glue in plywood can release volatile organic compounds.



Common symptoms of over-exposure to mold and other indoor allergens and indoor pollutants may include cough, congestion, runny nose, and eye irritation. Long term exposure may cause, or worsen, conditions such as asthma and other more serious health conditions. Although most routine encounters are not hazardous to healthy individuals, the only

way to ensure these symptoms are not due to indoor air quality is to have the indoors tested.

If mold is found, the most effective way to treat it is to have a professional remediation company correct the underlying cause and clean the affected area to ensure that any underlying moisture intrusion problems are successfully fixed and its recurrence prevented. Because mold can grow in just 24 to 48 hours, it is important to dry out the area and eliminate all sources of moisture as quickly as possible.

**Corporate Contact Information:**

Environmental Service Professionals, Inc.  
1111 E. Tahquitz Canyon Way  
Suite 110  
Palm Springs, CA 92262

Phone: (760) 327-5284  
Fax: (760) 327-5630

**Understand Mold**

- Mold can be helpful or harmful depending on where it grows
- Mold needs moisture to grow. It will not grow on dry materials
- Mold growing inside the home can affect the occupants health
- Occupants can learn to recognize mold

# WE CARE ABOUT YOUR AIR

## ENVIRONMENTAL SERVICE PROFESSIONALS

*"Peace of Mind"*

*For your Home, For Your Family,  
For Your Health*

### BACKGROUND

Exposure to mold can cause adverse health conditions through allergic response, toxigenic effects, and association with opportunistic infections. The Environmental Protection Agency (EPA) states that all molds have the potential to cause health effects. The Centers for Disease Control and Prevention (CDC) asserts that it is important to maintain buildings, prevent water damage and mold growth, and clean up moldy materials. The Institute of Medicine concluded that there is an association between exposure to mold and exacerbation of asthma. Respiratory illness and infections due to inhalation of fungal spores have been documented in immunocompromised individuals, as well as in individuals working in industrial, agricultural and office settings. Two mold-produced toxins have been classified by the National Toxicology Program as human carcinogens. Other potential health effects, such as pulmonary hemorrhage, memory loss and lethargy are still under investigation. At present, there are no legal standards for mold exposure. Molds can be found everywhere in the environment, and more than 1,000 different kinds of indoor molds have been found in U.S. homes. Molds can grow on any organic substance as long as



moisture and oxygen are present. Due to the ubiquitous nature of molds and the variation in individual susceptibility, no dose response relationships have been determined, making it extremely difficult to set safe, acceptable exposure limits. In contrast to occupational exposure limits that pertain to the healthy working population, any proposed mold exposure standards must be stringent enough to protect even the most susceptible members of the population including infants, elderly and immunocompromised individuals. Mold legislation has been passed in several states and task forces are currently working to establish acceptable exposure limits.

### THE SOLUTION

Environmental Service Professionals (ESP) is a company dedicated to enhancing public health through awareness and education. We specialize in identifying potential moisture and mold problems, investigating and analyzing the mold exposures, and assisting our clients in the remediation process. ESP has developed an innovative program to bring an affordable, high quality method of mold sampling to business owners and property managers, as well as individual homeowners and tenants, so that all individuals can afford to protect themselves and their families. We support our clients through the entire process, preparing them to react to mold contamination not with fear, but rather with

knowledge of the potential health issues and the necessary safety precautions. Our goal is not only to eliminate any current mold conditions, but also to teach our clients how to prevent future mold growth so they can effectively become advocates for their own health and safety. ESP is committed to providing the highest level of service by utilizing highly qualified assessors, scientifically accepted sampling methods, and independent accredited laboratories. We assist our clients in interpreting and understanding their laboratory results and provide remediation specifications written by a Certified Industrial Hygienist. While ESP may aid our clients, upon request, in selecting qualified remediation companies, we maintain no affiliation with any of these companies in order to operate with the highest integrity. After the remediation project has been completed, ESP will conduct a post-remediation survey to ensure that the remediation work was performed adequately. In the past, these services have been extremely costly and often required the home or business owner to call in multiple professionals to complete all aspects of the process. The expense of hiring certified professionals to sample and facilitate the remediation process often made mold testing and remediation available only to a small percentage of the population in need of these services. With ESP, these vital services are now accessible to anyone who may need them, anywhere in the country. ESP has packaged a comprehensive annual Mold and Moisture Management (MMM) program. This ...

Continued on page 3

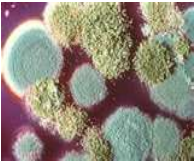
## WE CARE ABOUT YOUR AIR

... annual inspection is available for homes that have passed the initial assessment or have been successfully remediated and confirmed by the ESP process. ESP is the first company of its kind to be able to support a pro-active program such as the MMM for new and existing properties. Through this annual inspection the early detection of moisture related issues and/or microbial growth can be addressed when the problems are small and easy to remediate. Undetected microbial growth and moisture related problems can quickly escalate causing structural issues in a few years, costing thousands of dollars to remediate per occurrence. In the worst case scenario, without this early detection, these problems may not be discovered until the occupants are experiencing microbial or mold-related health problems. This proactive annual inspection will be conducted by highly trained Certified Environmental Home Inspector (CEHI). In most cases the same CEHI will return to a property every year. This adds to the confidence that they will notice subtle changes that may indicate a potential moisture intrusion problem. In the event of a real estate transaction, a homeowner who has participated in the MMM Program will have a clear record that the moisture management in their home that has been properly monitored and maintained over the years. This can be a major advantage in the selling of a home. It also benefits the homebuyer, allowing them to move into a new home with the "peace of mind" as it relates to Indoor Air Quality. Additionally, the MMM Program provides direct protection to the Stakeholders of the building/trade warranties, lenders, insurance and occupant liability.

### MOLD OF THE MONTH

#### Amerospore

Amerospore is a general classification for non-descript, small, round spores or spore-like structures which are unidentifiable by direct microscopic examination and can include Acremonium, Aspergillus, Penicillium, Verticillium, Trichoderma, Paecilomyces, Scytalidium, Cunninghamella, Monocillium, Gliocladium and some yeast. Aspergillus tends to colonize continuously damp materials such as damp wallboard and fabrics. Penicillium is commonly found in house dust, on water-damaged wallpaper, behind paint and in decaying fabrics. Acremonium requires very wet conditions for growth. Trichoderma grows well on paper, wood, cloth and unglazed ceramics.



### OUR VISION, OUR MISSION

To develop a state of the art procedure and provide services for sampling the Interior Air Quality of commercial and residential buildings.

To develop the Certified Home Environmental Inspector (CEHI) program to offer memberships throughout the United States and Canada.

To provide our staff and CEHIs world-class education in the techniques, technologies and ethics of delivering such services to the public.

### OUR VALUES

**Excellence.** We will strive to provide a level of excellence in service, which meets our customers' expectations.

**Integrity.** We will conduct our business with integrity, fairness and accountability.

**Respect.** We appreciate and respect the diversity of our clients, business colleagues, industry professionals and all who interact with us.

**Healthful Living.** We commit time, talent and financial resources to promote the principles of

Environmental  
Service  
Professionals



The experts in mold and  
moisture management

A publicly traded company

Stock Symbol:

**EVSP.OB**

#### *Testimonials from a few of our many satisfied clients*

*"The process was  
incredibly simple. I  
had always been  
concerned about  
mold, and now I  
have "Peace of  
Mind"."*

*Patti S., Phoenix,  
AZ*

*"After my water  
heater broke and my  
house was flooded,  
ESP came in and  
helped me through  
the whole process.  
Thank you ESP."*

*Sheila M., Las  
Vegas, NV*



Visit our website to  
find your local CEHI  
at: [espusa.net](http://espusa.net)



## **The ESP Advantage. Our People.**

From Chairman and Chief Executive Officer

Mr. Edward L. Torres

### **A message to all ESP Employees and Shareholders:**

Last year my charge was to position our Company deeper in to our newly emerging industry and begin to reshape its structure to create a National Organization that would be poised to take the leadership role in the Moisture, Mold and Home Inspection Industries. Today, I am pleased to announce we have successfully created such an Organization with your support, dedication, hard work and participation.

With the establishment of our primary service programs, ESP through its subsidiaries will launch several new programs that will reshape the Moisture, Mold and Home Inspection Industries as we know them today. These two industries are now destined to become one.

ESP has emerged from 2006 as the leader in making this transfer occur by developing a holding company structure that will set the stage to acquire other independent owner operators in the Home Inspection, Mold Inspection, moisture related associations and environmental energy industries throughout the United States and Canada.

We live in a world today where there are many obstacles in our daily lives. Many times we work so hard and run so fast that we can be tempted to forget the most important core of our existence that includes: our families, our homes and our health.

Last year, I outlined the importance of bringing together the best components of various industries to provide the proper leadership for breakout success and commitment to our Strategic Partners, Customers and our Shareholders. That time has come for ESP.

As we begin to move forward in 2007, we will announce several strategic acquisitions that will place ESP in the leadership role for success and service. This is our commitment to you. With the trust and confidence we have received and continue to receive from our Customers and Shareholders and with the leadership of our staff, we have the highest likelihood for continued success. ESP will invest its time and resources in developing and delivering state-of-the-art procedures and tools to provide environmental services for addressing many environmental issues in the Building, Residential, Commercial and Real Estate Industries

Many industries envision 2007 as a flat year for growth due to the real estate market adjustments. I envision 2007 as a year for continued success by bringing together several industries that are ready for consolidation. Many people see consolidation as what can be construed as a possible reduction in workforce and service. Consolidation, in my opinion, provides for more cost effective services. My view is that most companies do not simply produce for cash flow but can adjust or cut services for more profit. Therefore, consolidation, when properly guided, can increase the level of service and increase profit potential. Taking the Home Inspection Industry for example, in late 2006, the Industry had experienced a reduction in revenue between 30%-50% due to a lower number of sales in the real estate market. Businesses must be able to continue in all types of markets and that is why ESP has now created a new revenue stream through our CEHI Program which should not only make up these losses but could also generate enough additional revenue to recoup them.

The Chemical Industry in 2001 was going through some consolidations and in researching what those leaders did to prepare, I was able to read the text of some of the speeches given. These words inspired me so I share some of them with you here. It was said then and is still true now that the first responsibility of a leader is to define reality. I believe this wholeheartedly. I believe reality is particularly applicable when it comes to outlining a sound business strategy. As leaders, we've got to rub our nose in and roll up our sleeves in the reality of the world. We have got to set strategy based on what we have learned. By doing so, we can defend and grow our market share in our established businesses and we can better manage new and emerging opportunities that are right before us.

ESP does understand the issues that are currently before us and also coming forth that will affect the Insurance, Mortgage Banking, Real Estate and Building Industries as it relates to Moisture/Mold related issues. ESP understands the relationship between these Industries and the consumer. The consumer wants to believe that we care. They want to believe we are dedicated to improving their lives. They want to believe that the world is getting better. Only by enabling the Consumer to believe these things and by wanting these things truly for ourselves, can we continue to grow bigger, reach further, and earn more. The potential to earn more in my view is a natural byproduct of doing sincerely good work. ESP understands the significant cost associated with these issues and with that in mind, we know the Consumer must be kept as a key component of the equation, by providing a solution that will benefit all parties. This is why our Annual Moisture Mold Management Inspection Program is poised to become the solution. It will establish a well balanced, cost effective solution to an issue that for many years has not been dealt with due to its uncertainty of liability.

ESP is committed to providing these Programs by starting in our own home office with world-class education and training of our Staff Members in the techniques and ethics of delivering these services to the public. We are also committed to further developing the tools, technologies and processes to effectively deliver these services in a cost effective, comprehensive and timely manner.

We all look forward to a successful 2007 and to a bright future for ESP, for its Shareholders and Employees. We have a solid, strategic business plan in place and know we can make an earnest difference to improve today's hectic lifestyles as ESP strives to deliver "*Peace of Mind*" to every interaction.

I believe that the best way to navigate this journey and grow our profit is through voluntary measures aimed at soothing community concerns, avoiding government regulation and, through a strong public relations strategy, promoting our image as a Company that improves our daily lives.

**Sincerely,**

**Edward L. Torres**  
**Chairman and CEO**  
**ESP, Inc**